

△ Contact our sales office for delivery dates and prices since this is a special model.

SMC P.G.Information (Specialized Product)

SP143X-023E
P: SZ

Speed Controller / In-line Type

AS*000-*-*-X750

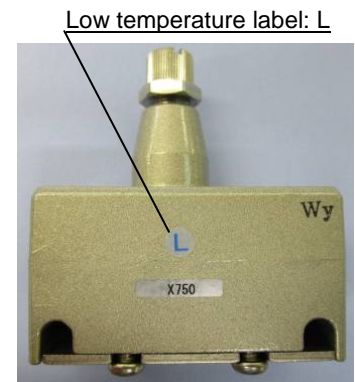
SMC Corporation
4-14-1, SOTO-KANDA,
CHIYODA-KU,
101-0021, JAPAN
URL: <http://www.smcworld.com>

■ Features: Improved environmental resistance

- All metal exterior
(Stainless steel is used for main portion)
- Body surface coated with epoxy resin
- Changeable seal material per temperature spec



Standard temperature (-5 to 60 °C) High temperature (-5 to 80 °C) Low temperature (-30 to 60 °C)



■ Specifications:

Fluid	Air
Proof pressure	1.5MPa
Operating pressure range	0.05 to 1MPa

Note) Please refer to Best Pneumatics No.6 (Speed Controller with One-touch Fittings/In-line type AS series) for flow characteristics.

■ How to Order:

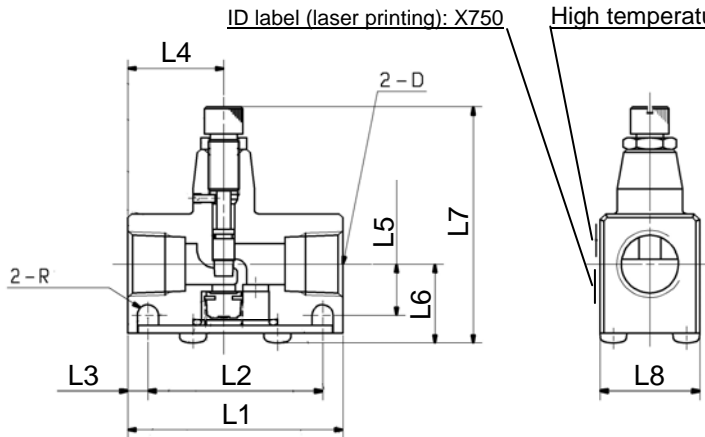
AS	2	000 –		01	-	H	- X750
	● Body size		● Thread type	● Port size		● Ambient and fluid temperature ^{Note1)}	
2	1/8, 1/4 standard	Nil	Rc	01	1/8	Nil	Standard temperature (-5 to 60 °C)
3	3/8 standard	N	NPT	02	1/4	H	High temperature (-5 to 80 °C)
4	1/2 standard	F	G	03	3/8	L ^{Note2)}	Low temperature (-30 to 60 °C)
				04	1/2		

Note1) No freezing
Note2) AS2000 is excluded.

In-line type	Port size			
	1/8	1/4	3/8	1/2
AS2000	●	●	-	-
AS3000	-	●	●	-
AS4000	-	●	●	●

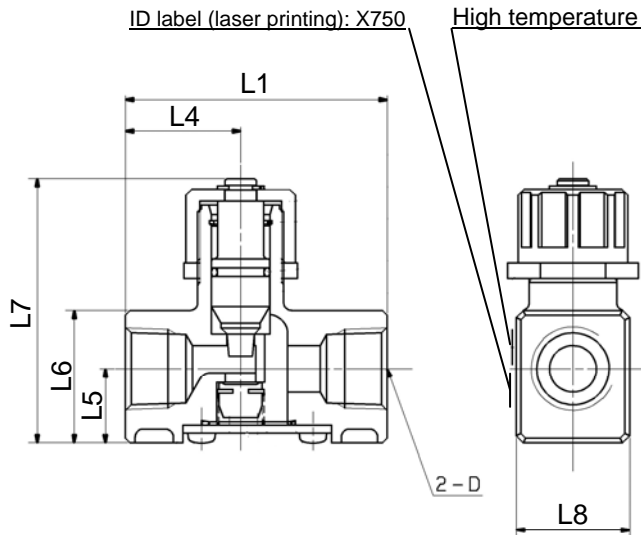
■ Dimensions mm:

AS2000, AS3000



- Component Parts**
- Body material: ZDC (AS2000)
ADC (AS3000)
 - Material (other than body): Stainless steel
 - Seal material: NBR (Standard temperature)
FKM (High temperature)
CR (Low temperature)

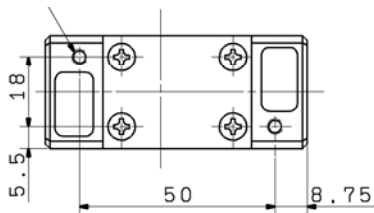
AS4000



- Component Parts**
- Body material: ADC
 - Handle material: ZDC
 - Lock nut material: ZDC
 - Material (other than body): Stainless steel
 - Seal material: NBR (Standard temperature)
FKM (High temperature)
CR (Low temperature)

2-M4x0.7

Effective thread depth 6



Model	Port size D	L1	L2	L3	L4	L5	L6	L7 ^{Note)}		L8	R
								MAX.	MIN.		
AS2000*01*-X750	1/8	40	30	5	17	10	15.5	54.5	50	16	R2.25
AS2000*02*-X750	1/4	40	30	5	17	11.5	17	56	51.5	20	R2.25
AS3000*02*-X750	1/4	56	45.5	5.25	25	13.25	20.6	68	61	26	R2.75
AS3000*03*-X750	3/8	56	45.5	5.25	25	13.25	20.6	68	61	26	R2.75
AS4000*02*-X750	1/4	67.5	-	-	29.5	19	34	76.5	68.5	29	-
AS4000*03*-X750	3/8	67.5	-	-	29.5	19	34	76.5	68.5	29	-
AS4000*04*-X750	1/2	67.5	-	-	29.5	19	34	76.5	68.5	29	-

Note) Reference dimensions for threads after installation.

⚠ Caution: To ensure the safest possible operation of this product, please be sure to thoroughly read the "Safety Instructions" in our "Best Pneumatics" catalog before use.