

Cassette Type Manifold Serial Transmission Unit (Series EX121)

SMC CORPORATION
1-16-4 Shimbashi, Minato-ku
Tokyo 105-0004, JAPAN

URL: <http://www.smcworld.com>

SS5Y*-60S1*-***

Application: Reduced wiring and space-saving installation.

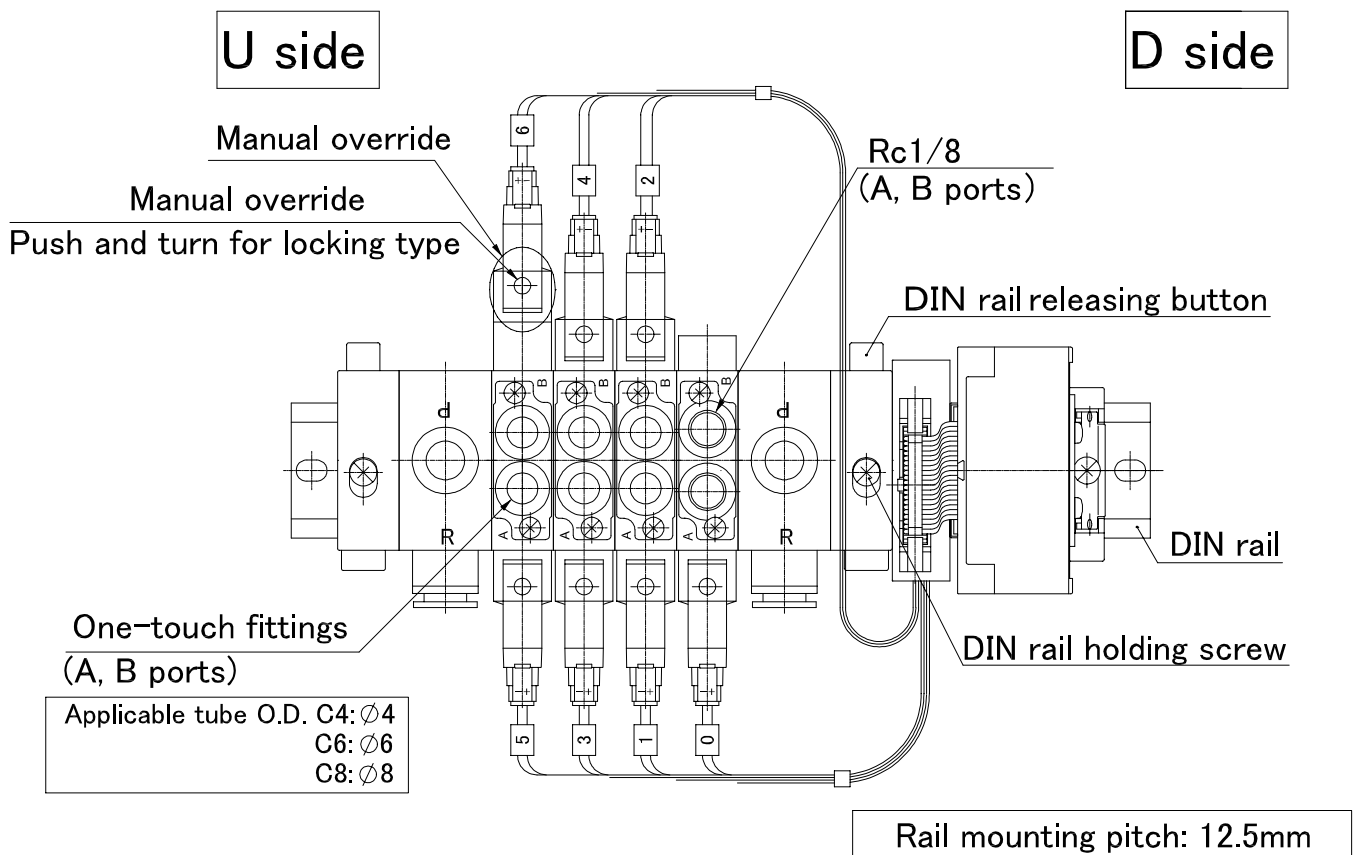
Feature 1: Wiring system for serial transmission is for cassette type manifold.

Feature 2: Available from various protocols. (Refer to "How to Order".)

Feature 3: Each connector assembly comes with marking tube.

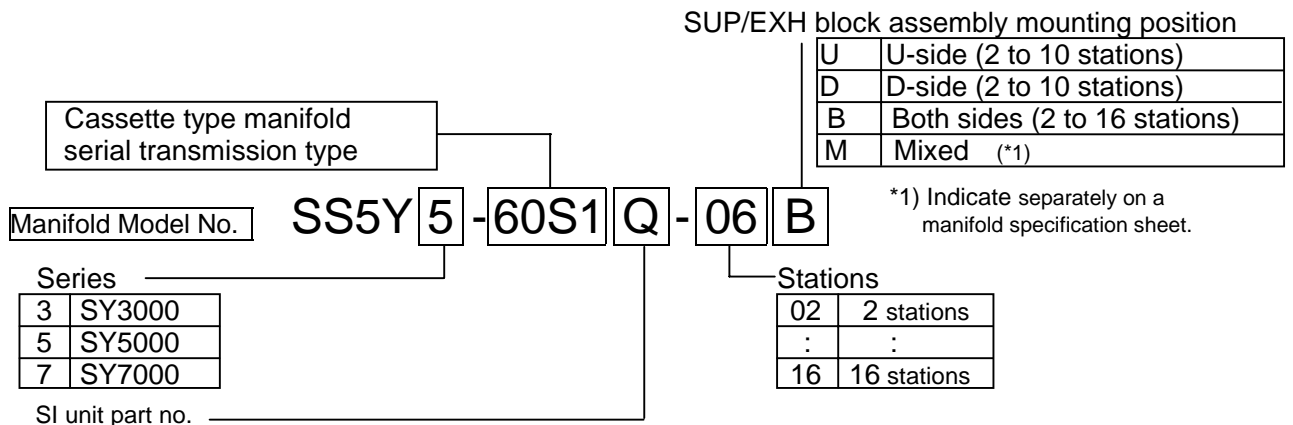
Specifications

- Refer to our Best Pneumatics general catalog for specifications of solenoid valves.
- Contact your SMC sales representative for literature on serial transmission system.



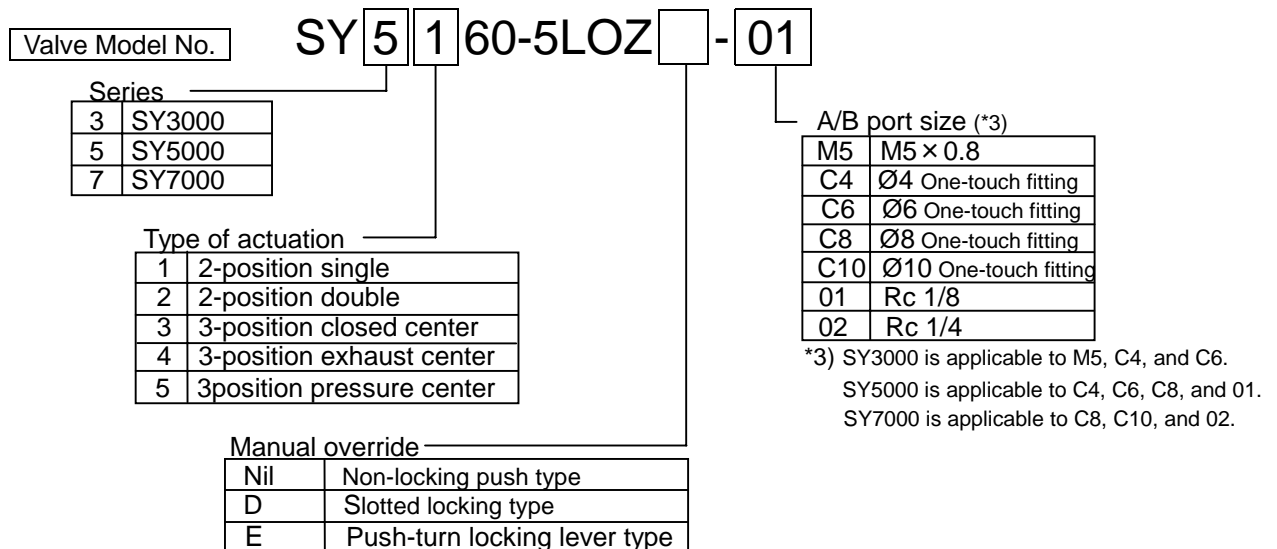
Series SY5000 manifold with EX121 SI Unit

How to Order



Symbol	Specification
A	Series EX300 with SI unit (general type) (*2)
B	MELSECNET/MINI-S3 Data Link System with SI unit (Mitsubishi Electric Corporation)
C	SYSBUS Wire System with SI unit (OMRON Corporation)
D	Satellite I/O Link System with SI unit (SHARP Corporation)
F1	16 outputs Uni-wire System with SI unit (NKE Corporation)
H	16 outputs Uni-wire H System with SI unit (NKE Corporation)
J1	16 outputs S-LINK System with SI unit (SUNX Corporation)
J2	8 outputs S-LINK System with SI unit (SUNX Corporation)
K	T-LINK Mini System with SI unit (Fuji Electric Co., Ltd.)
Q	DeviceNet and CompoBus/D with SI unit (OMRON Corporation)
R1	16 outputs CompoBus/S with SI unit (OMRON Corporation)
R2	8 outputs CompoBus/S with SI unit (OMRON Corporation)
V	CC-LINK with SI unit (Mitsubishi Electric Corporation)
U	JEMA Net (JPCN-1) with SI unit

*2) A transmission unit is required on the CPU side for a general type.

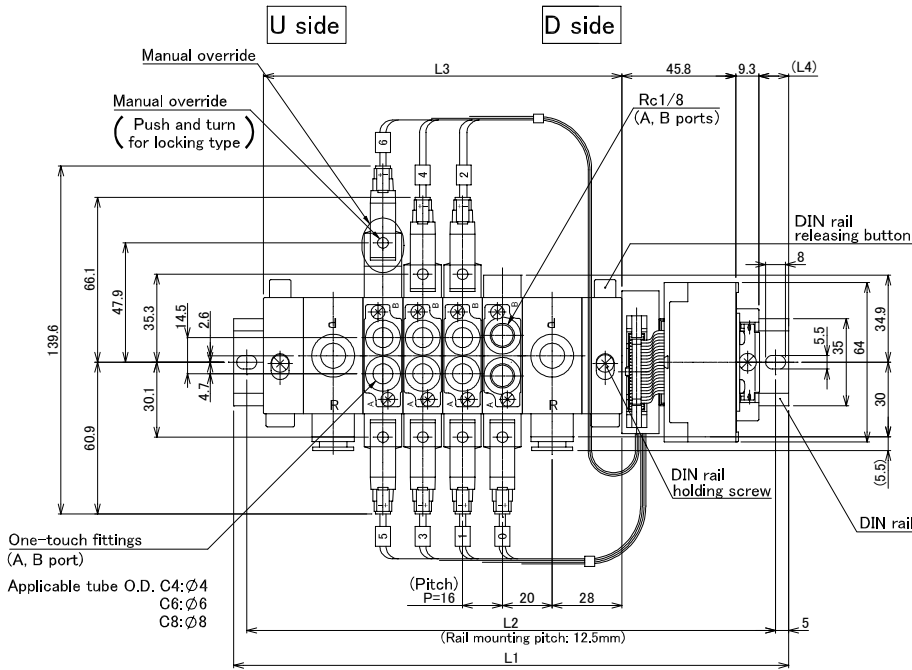


[How to Order Manifold]

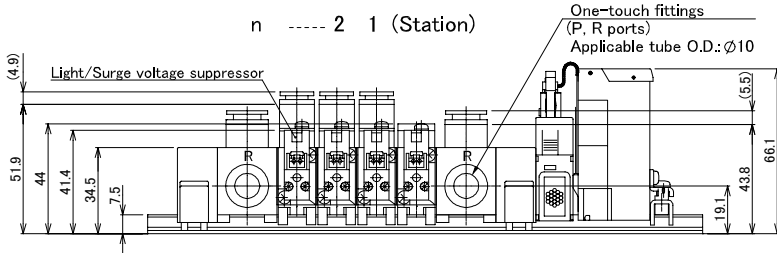
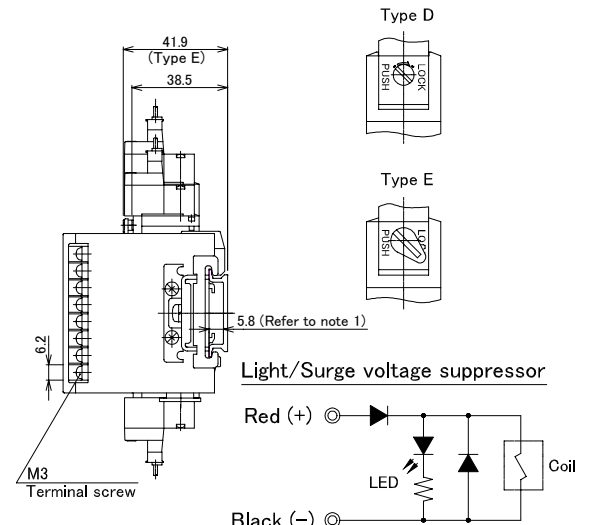
SS5Y3-60S1Q-06B --- 1 set (Part no. for DeviceNet 6-station manifold base)
 *SY3260-5LOZ-M5 --- 2 sets (Part no. for 2-position double solenoid valve)
 *SY3360-5LOZ-M5 --- 2 sets (Part no. for 3-position closed center solenoid valve)
 *SY3460-5LOZ-M5 --- 2 sets (Part no. for 3-position exhaust center solenoid valve)

To order valves and options mounted onto the manifold at the factory, add an asterisk "" at the beginning of the part number.

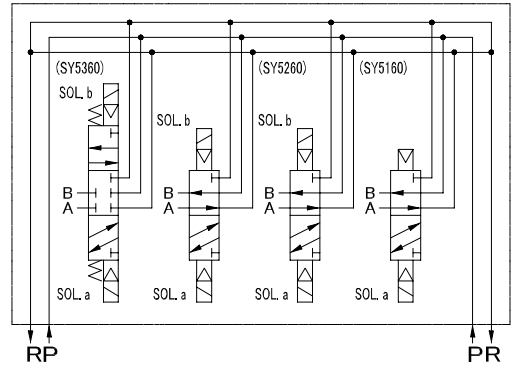
Dimensions (SS5Y5-60S1*-*B): mm



Close-up of manual override



Pneumatics circuit



L: Dimensions mm

Stations	2	3	4	5	6	7	8	9	10	11	12	13	14	15	16
L1	198	210.5	223	248	260.5	273	298	310.5	323	335.5	360.5	373	385.5	410.5	423
L2	187.5	200	212.5	237.5	250	262.5	287.5	300	312.5	325	350	362.5	375	400	412.5
L3	112	128	144	160	176	192	208	224	240	256	272	288	304	320	336
L4	15.5	14	12	16.5	15	13	17.5	16	14	12.5	17	15	13.5	18	16
** (Stations)	02	03	04	05	06	07	08	09	10	11	12	13	14	15	16

Note 1: When using DIN rail mounting screws in the range of L3 dimension, dimensions of the screw head must be within the specified value.

Note 2: Marking tube no. of each connector indicates the output number of connected SI unit.

Note 3: Specify allocation of the SI unit to each solenoid on a wiring specification of the manifold specification sheet.

Note 4: Refer to our technical reference for handling SI unit.

Note 5: The maximum number of stations is 8 stations (for single solenoid valve) for SI unit J2 and R2.



Caution

To ensure the safe operation of this product, please be sure to read the "Safety Instructions" in our "Best Pneumatics" general catalog thoroughly before use.