

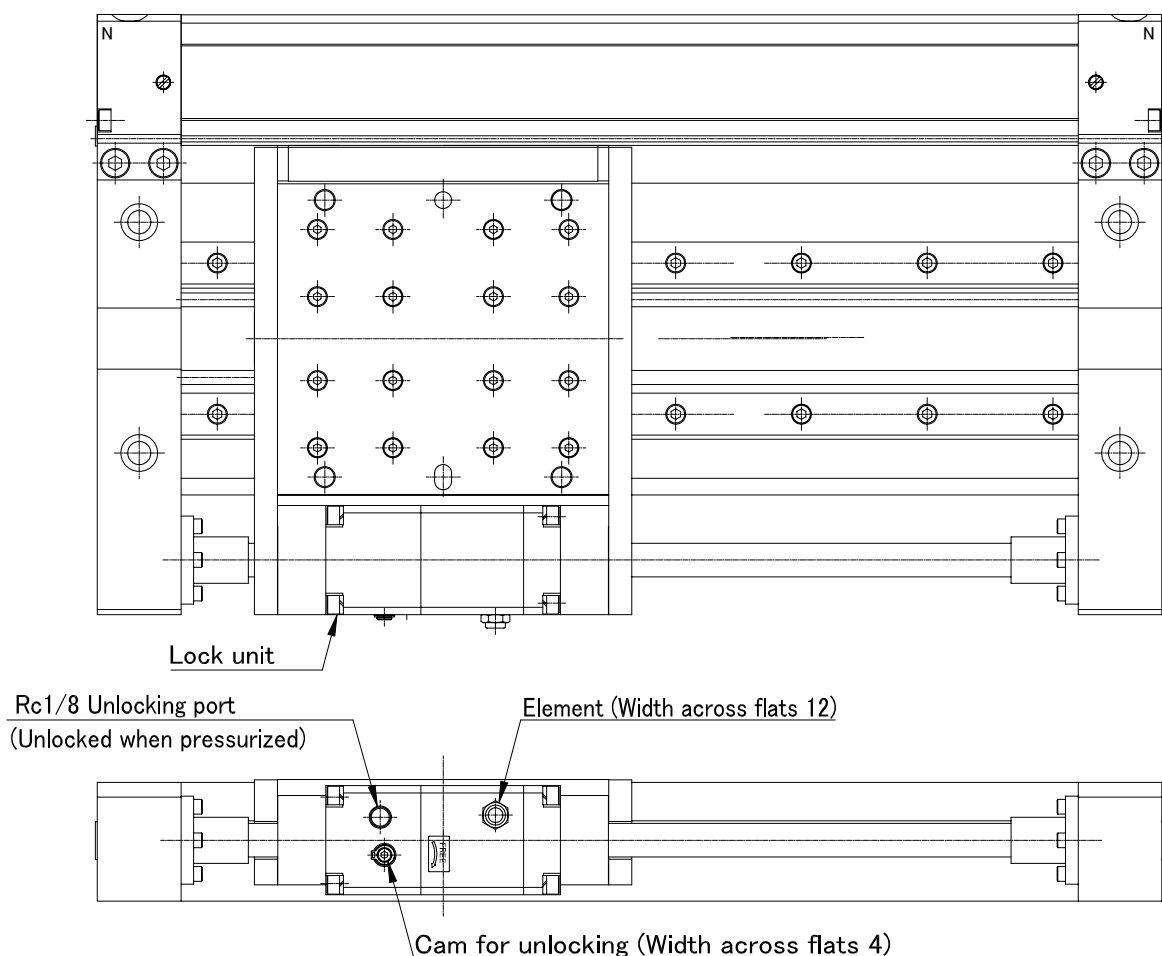
Mechanical Joint Rodless Cylinder with a Fine Lock

MY2HT40G-G3953-178

SMC CORPORATION
1-16-4 Shimbashi, Minato-ku
Tokyo 105-0004, JAPAN
URL: <http://www.smcworld.com>

Feature 1 : Spring locking mechanism (CNG type) is added to a mechanical joint rodless cylinder (MY2HT type)

- 1- Loading capacity is equivalent to that of Series MY2HT. (Double axis guide type)
- 2- Wedge effect from the taper ring and steel balls increases the force.
- 3- Same holding force is obtained in both extending and retracting directions.
(Locked at both ends)
- 4- A hexagon wrench can unlock the spring lock even when the air supply is cut off
or air is discharged.
- 5- Fail-safe construction locks the cylinder when the manual pressure is released.



Specifications

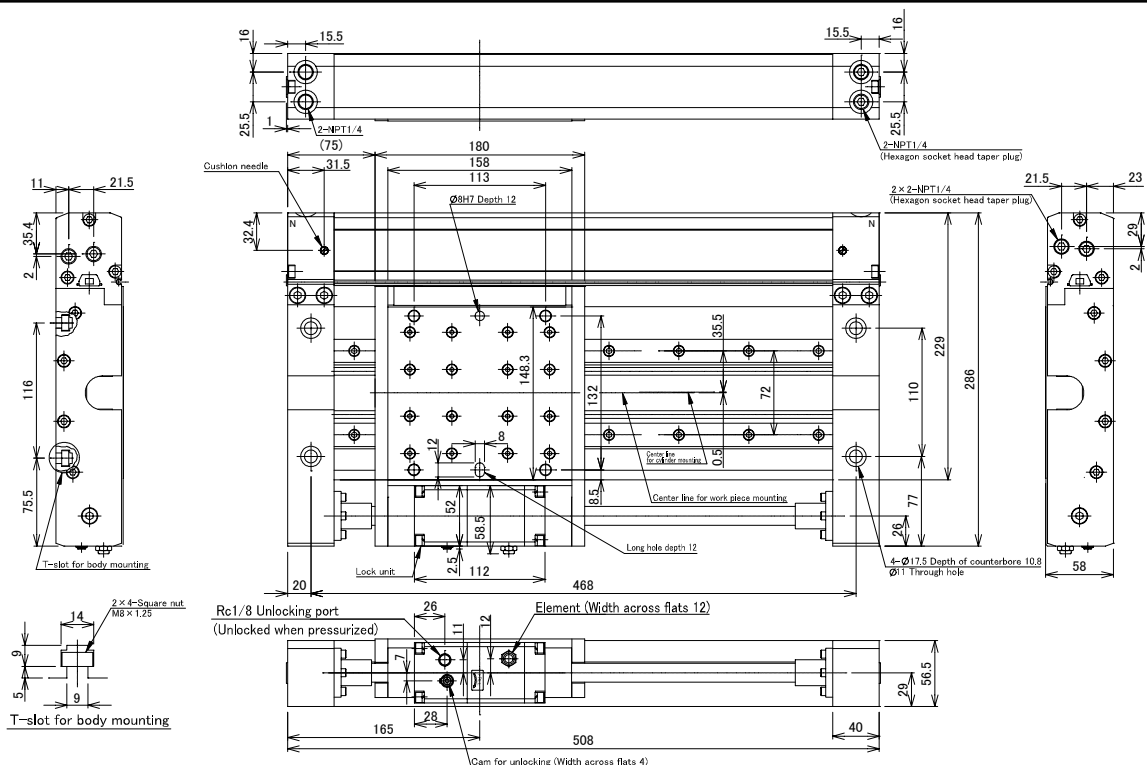
Cylinder specifications

Bore size	Ø40mm
Fluid	Air
Action	Double acting type
Maximum operating pressure	0.8MPa
Minimum operating pressure	0.1MPa
Proof pressure	1.2MPa
Piston speed	100 to 1000mm/s
Ambient and fluid temperature	5 to 60°C
Rod end thread tolerance	JIS class 2
Stroke	178mm
Stroke length tolerance	+1.8 0 mm
Cushion	Air cushion
Lubrication	Not required (Non-lube)
Port size	NPT1/4

Lock specifications

Lock type	Spring lock (Exhaust lock)
Holding force (Maximum static load)	860N
Lock released pressure	0.25MPa or more
Lock starting pressure	0.20MPa or less
Operating pressure range	0.25 to 1.0MPa
Locking direction	Both sides

Dimensions: mm



! To ensure the safest possible operation of this product, please be sure to read thoroughly the "Safety Instructions" in our "Best Pneumatics" general catalog before use. Please keep in mind that improper handling or operation of the lock can cause damage to equipment and other possible problems. Be sure to read the Warnings and Caution statements regarding locks in the Series CNG section of our Best Pneumatics 2 general catalog and operate the lock accordingly.