

# End Lock Cylinder

## C(D)S1 - - X1347

SMC CORPORATION  
1-16-4 Shimbashi, Minato-ku  
Tokyo 105-8659, JAPAN  
URL: <http://www.smcworld.com>

Features: Air Cylinder/CS1 Series (φ125, φ140, φ160) with end lock function

### Specifications

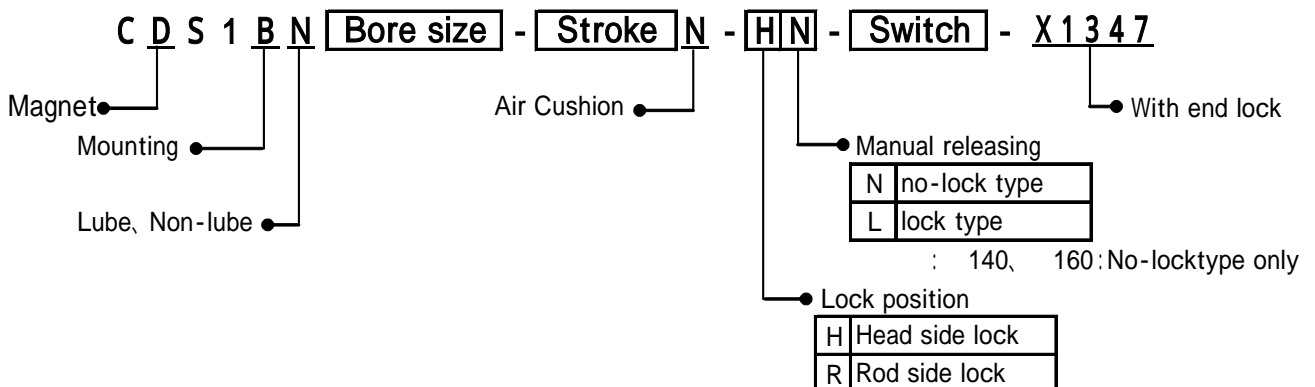
#### Cylinder Specifications

Bore size	φ125, φ140, φ160 mm
Max. operating pressure	1.0 MPa
Min. operating pressure	0.2 MPa
Piston speed	50 ~ 500 mm/s
Cushion	Air cushion
Ambient and fluid temperature	Without auto switch: -10°C to 70°C (No freezing) With auto switch: -10°C to 60°C (No freezing)

#### End lock specifications

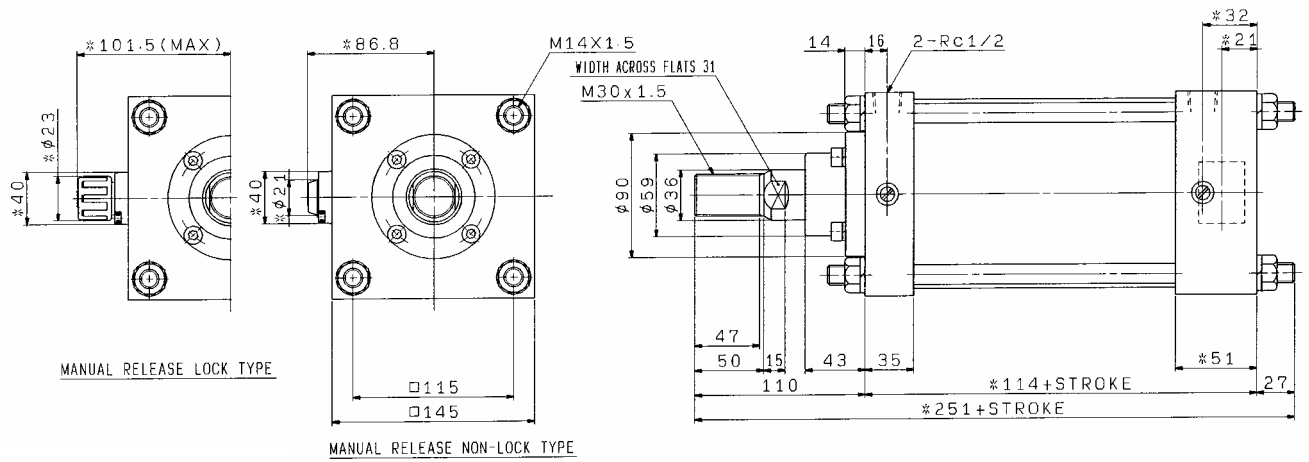
End lock position	Rod side, Head side		
Max. holding force	φ125	φ140	φ160
	5390 N	7550 N	9212 N
Manual release	Lock type Non-lock type	Non-lock type	
Manual releasing bolt for no-lock type	M5 x 40L	M6 x 50L	M6 x 55L
Lock releasing pressure	0.2MPa		

### How to Order

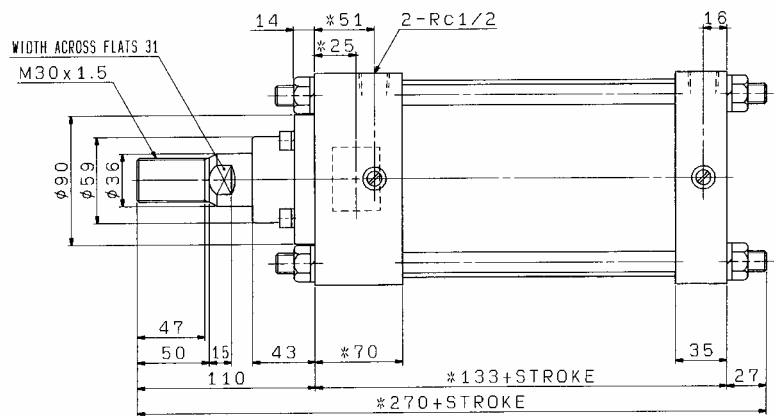


# Dimensions: mm

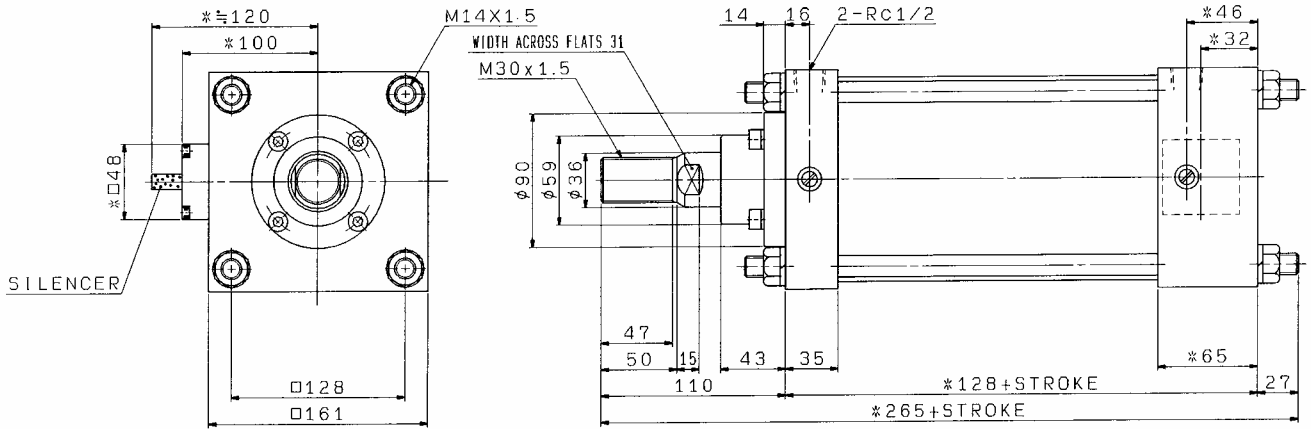
125



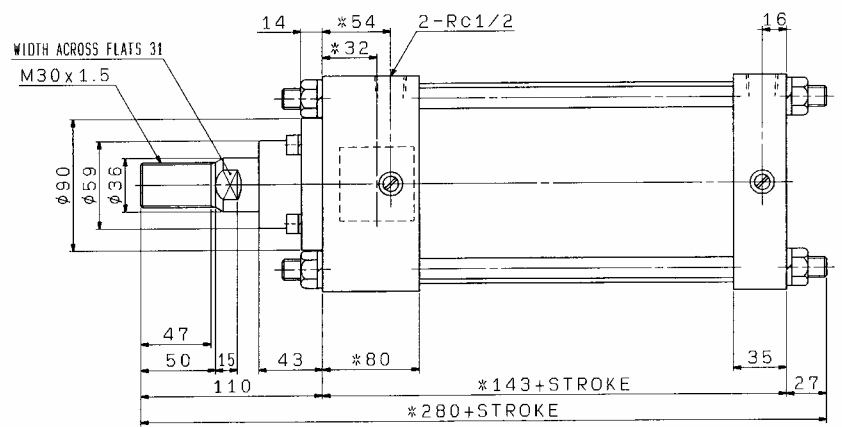
Head side lock



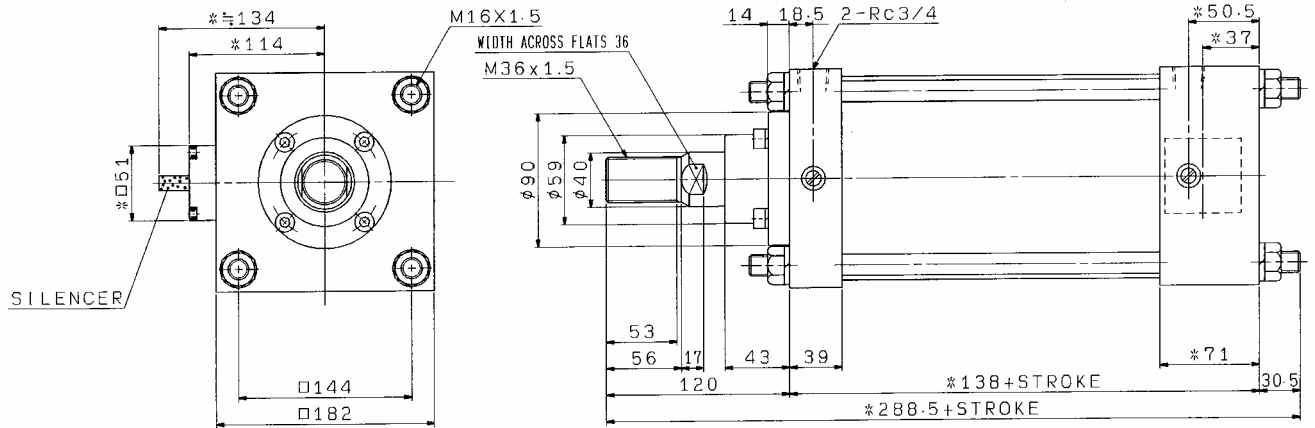
Rod side lock



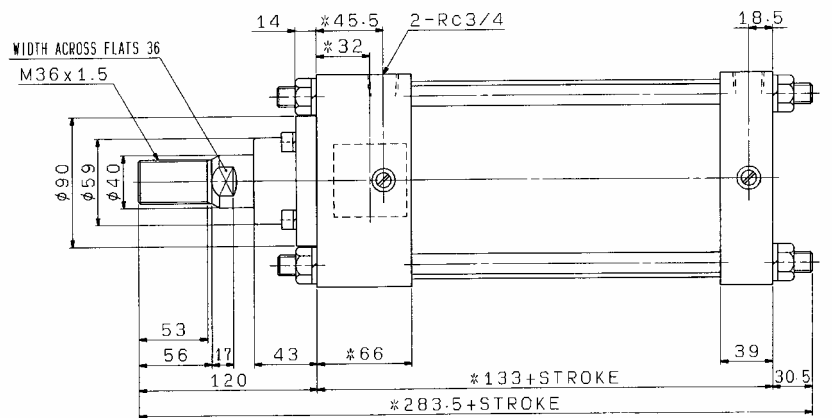
Head side lock



Rod side lock



**Head side lock**



**Rod side lock**

**Recommended pneumatic circuit/Unlocking**

⚠ Caution

Be sure to read precautions in our catalog “End Lock Cylinder” on how to unlock the cylinder.

**Manual release Non-lock type**

⚠ Caution

For the  $\phi 125$  model, insert the accessory bolt from the top of the rubber cap; for the  $\phi 140$  and  $\phi 160$  models, remove the silencers before inserting, screw in until it stops, and pull it to release the lock. If you stop pulling the bolt, the lock will engage.

⚠ **Caution** : To ensure the safest possible operation of this product, please be sure to read thoroughly the “Safety instructions” in our “Best Pneumatics” general catalog before use.